

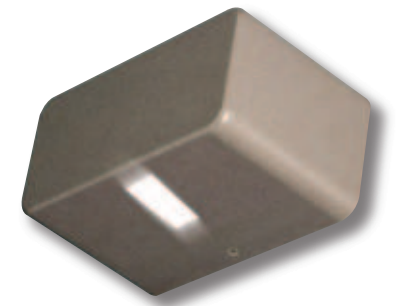
Minimodo

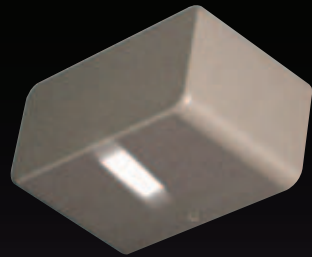
EFFETTI PARETE
WALL EFFECTS



Proiettore per effetto parete in alluminio pressofuso, IP 65. Dotato di lenti biconvesse in vetro temprato e vetri piani, consente l'impiego di lampade alogene, fluorescenti e LED. E' adatto per medie strutture architettoniche e abitazioni private per personalizzare e arredare con la luce e illuminare luoghi di passaggio. Vi è la possibilità di avere combinazioni di fasci stretti e larghi creando effetti luminosi accattivanti.

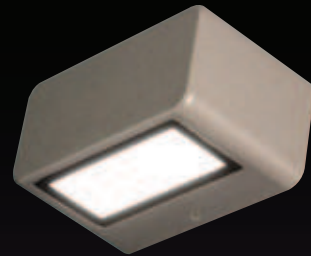
Die-cast aluminium wall-effect light, IP 65. Fitted with biconvex lens in tempered glass and flat glasses for use with halogen, fluorescent lamps and LEDs. It is suitable for medium sized architectural, commercial and residential use. You can combine narrow and wide beams, creating eye-catching light effects.





1330 180 x 90 x h 111
1 FASCIO STRETTO
1 SPOT BEAM

1331 180 x 90 x h 111
2 FASCI STRETTI 180°
2 SPOT BEAM 180°



1334 180 x 90 x h 111
1 FASCIO STRETTO + 1 LARGO 180°
1 SPOT BEAM + 1 FLOOD 180°

1332 180 x 90 x h 111
1 FASCIO LARGO
1 FLOOD BEAM

1333 180 x 90 x h 111
2 FASCI LARGHI 180°
2 FLOOD BEAM 180°

CERTIFICAZIONI
CERTIFICATION



GRADO DI PROTEZIONE
IP / IK RATE

IP 65 / IK 06
IP 65 / IK 06

CLASSE DI ISOLAMENTO
CLASSIFICATION

classe I
class I

CORPO
HOUSING

alluminio pressofuso EN AB 47100 alta resistenza all'ossidazione
die cast aluminium EN AB 47100 high resistance to oxidation

DIFFUSORE
DIFFUSER

vetro sodico calcico temprato 3 mm - lente biconvessa
3 mm soda-lime tempered glass -biconvex lens

VITERIA ESTERNA
EXTERNAL FIXINGS

inox A4
stainless steel A4

GUARNIZIONI
SEALING GASKET

silicone ricotto
silicone

ENTRATA CAVO
CABLE ENTRY

pressacavo in EPDM priva di alogeni Ø 8 /12 mm.
EPDM cable-gland free of halogens Ø 8 / 12 mm.

SECONDA ENTRATA CAVO
SECOND CABLE ENTRY

disponibile
available

LAMPADINA
LAMP

esclusa
not included

FINITURA
FINISH

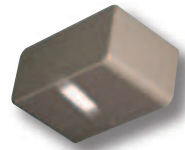
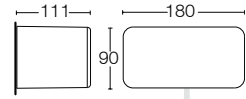
verniciatura in polvere poliestere ad alta resistenza ai raggi UV ed alla corrosione
powder coated polyester high resistance to UV and oxidation



>>Minimodo 13W TC-DE

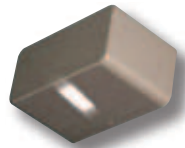
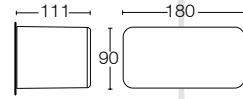
1330

1 fascio stretto 1 spot



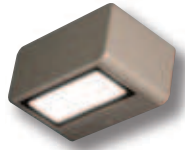
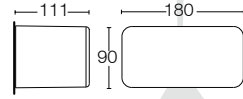
1331

2 fasci stretti 2 spot



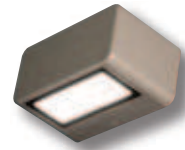
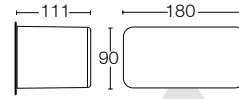
1334

1 fascio largo + 1 stretto
1 flood + 1 spot



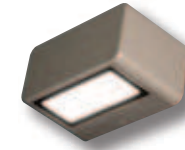
1332

1 fascio largo 1 flood



1333

2 fasci larghi 2 flood



finiture disponibili finishes available

bianco	grigio antracite	grigio RAL9006	marrone ruggine
white	anthracite grey	RAL9006 grey	rust brown

finiture disponibili finishes available

bianco	grigio antracite	grigio RAL9006	marrone ruggine
white	anthracite grey	RAL9006 grey	rust brown



.43X.T

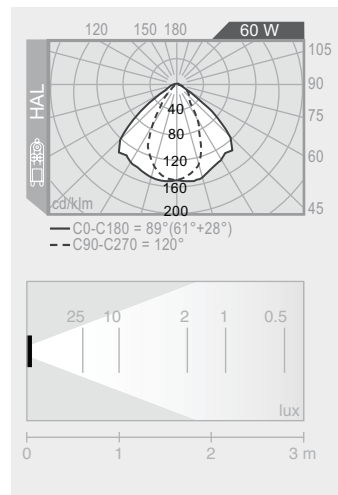
vetro trasparente clear diffuser

60W HAL

G9

spot

820 lm



.43X.T

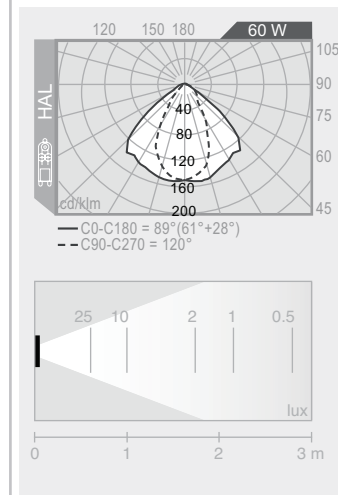
vetro trasparente clear diffuser

60W HAL

G9

flood

820 lm



.G1F.T

vetro trasparente clear diffuser

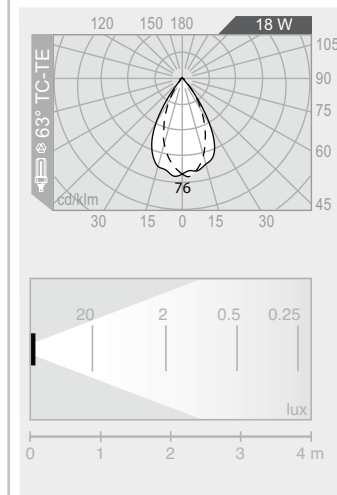
alimentatore elettronico electronic ballast

18W TC-TE

Gx24q-2

flood 63°

1200 lm



.82F.T

vetro trasparente clear diffuser

alimentatore incluso transformer included

5W 5LED 350mA

bianco white

flood

550 lm 6000 K Cool White



Disponibile solo per versione cod. 1332.
Available only for version cod. 1332.

.B7F.T

vetro trasparente clear diffuser

alimentatore incluso transformer included

5W 5LED 350mA

bianco white

flood

375 lm 3000 K Warm White



Disponibile solo per versione cod. 1332.
Available only for version cod. 1332.

codice colori
colour codes

- .01** □ bianco white
- .05** □ grigio antracite anthracite grey
- .13** □ grigio RAL9006 RAL9006 Grey
- .45** □ marrone ruggine rust brown

accessori
accessories

FILTRI COLORATI DICROICI
DICHROIC COLOURED FILTERS



- 129** rosso red
- 130** giallo yellow
- 131** blu blue
- 133** verde green

Il filtro colorato viene facilmente installato nell'apposito alloggiamento dietro il diffusore.

The coloured filter can be easily installed in the specific space behind the diffuser.