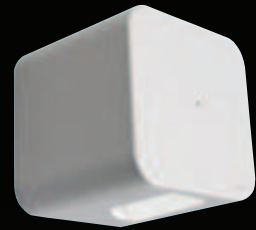




Proiettore per effetto parete in alluminio pressofuso, IP 65. Dotato di lenti biconvesse in vetro temprato e vetri piani, consente l'impiego di lampade a ioduri metallici, alogene e fluorescenti. Adatto per l'illuminazione sia di medie strutture architettoniche sia di abitazioni private. Vi è la possibilità di avere combinazioni di fasci stretti e larghi creando effetti luminosi molto spettacolari.

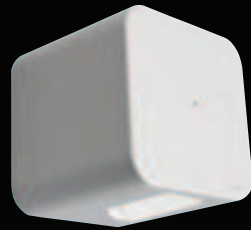
Wall effect mounted light in die cast aluminum high resistant at oxidation, IP 65. Equiped fixture with biconvex lens tempered glass and a flat glass. It allows the use of metal halide, halogen and fluorescent lamps. Bivio is designed to illuminate both private and commercial architectural environment. Combinations of spot and flood beams create very spectacular lighting effects.





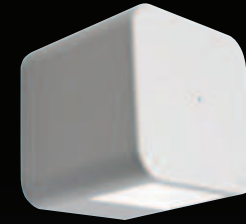
1 FASCIO STRETTO
1 SPOT BEAM

1340



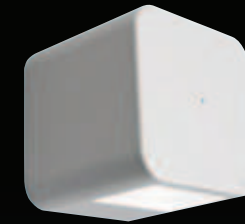
2 FASCI STRETTI
2 SPOT BEAM

1342



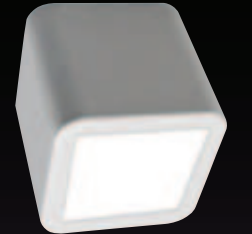
1 FASCIO LARGO
1 FLOOD BEAM

1341



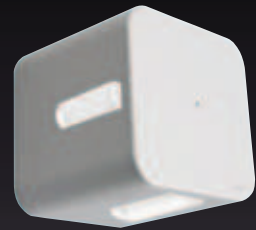
2 FASCI LARGHI
2 FLOOD BEAMS

1343



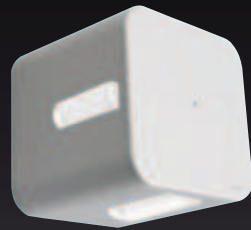
VERSIONE SOFFITTO 1 FASCIO LARGO
CEILING VERSION 1 FLOOD BEAM

1348



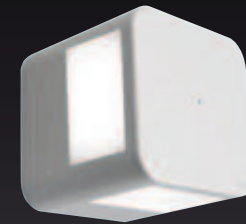
2 FASCI STRETTI 90°
2 SPOT BEAM 90°

1346



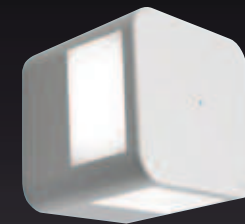
4 FASCI STRETTI
4 SPOT BEAM

1344



4 FASCI LARGHI
4 FLOOD BEAMS

1345



1 FASCIO STRETTO + 1 LARGO
1 SPOT + 1 FLOOD BEAM

1347

CERTIFICAZIONI
CERTIFICATION



GRADO DI PROTEZIONE
IP / IK RATING

IP 65 IK06
IP 65 IK06

CLASSE DI ISOLAMENTO
CLASSIFICATION

classe I
class I

CORPO
HOUSING

alluminio pressofuso EN AB 47100 alta resistenza all'ossidazione
die-cast aluminium EN AB 47100 high resistance to oxidation

DIFFUSORE
DIFFUSER

vetro sodico calcico temprato 3 mm / lente biconvessa
3 mm soda-lime tempered glass / biconvex lens

VITERIA ESTERNA
EXTERNAL FIXINGS

inox A4
stainless steel A4

GUARNIZIONI
SEALING GASKET

silicone ricotto
silicone

ENTRATA CAVO
CABLE ENTRY

passacavo in silicone nickelato M20 Ø 7/13 mm
nickel-plated silicone cable gland M20 Ø 7/13 mm

SECONDA ENTRATA CAVO
WIRE THROUGH CONNECTION

disponibile
available

LAMPADINA
LAMP

esclusa
not included

FINITURA
FINISH

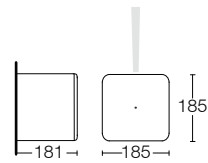
verniciatura in polveri poliestere ad alta resistenza ai raggi UV ed alla corrosione
powder coated polyester high resistance to UV and oxidation



>>Bivio 35W HIT-TC flood + spot

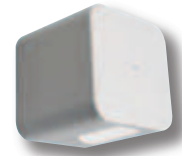
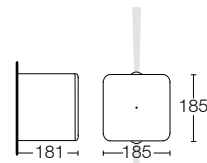
1340

1 fascio stretto 1 spot beam



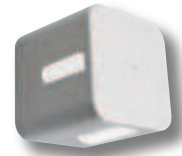
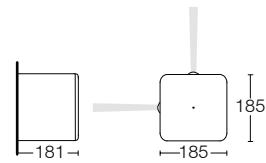
1342

2 fasci stretti 2 spot beams



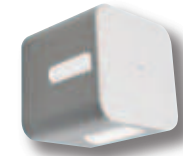
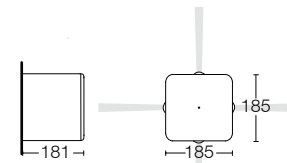
1346

2 fasci stretti 2 spot beams



1344

4 fasci stretti 4 spot beams



finiture disponibili finishes available

grigio antracite	grigio RAL 9006	marrone ruggine	bianco
anthracite grey	RAL 9006 grey	rust brown	white

.E9X.T

vetro trasparente clear diffuser
alimentatore elettronico electronic ballast

20W HIT-TC

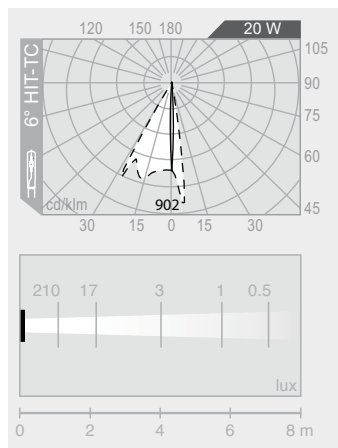
G8,5

spot 6°



1700 lm

con lente / with lens



.F6X.T

vetro trasparente clear diffuser

35W HIT-TC

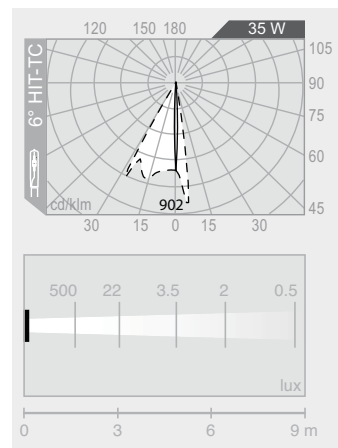
G8,5

spot 6°



3300 lm

con lente / with lens



.36X.T

vetro trasparente clear diffuser

100W QT32 Halogen Philips
Hi-Light Sylvania

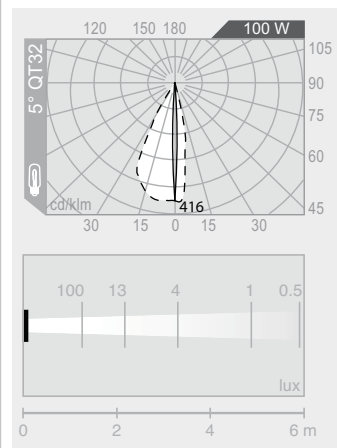
E27

spot 5°



1550 lm

con lente / with lens



codice colori
colour codes

- .05** grigio antracite anthracite grey
- .13** grigio RAL9006 RAL9006 grey
- .45** marrone ruggine rust brown

accessori
accessories

FILTRI COLORATI DICROICI
DICHROIC COLOURED FILTERS



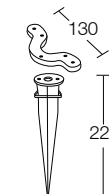
- 113** rosso red
- 114** giallo yellow
- 115** blu blue
- 116** verde green

Il filtro colorato viene facilmente installato nell'apposito alloggiamento dietro il diffusore.

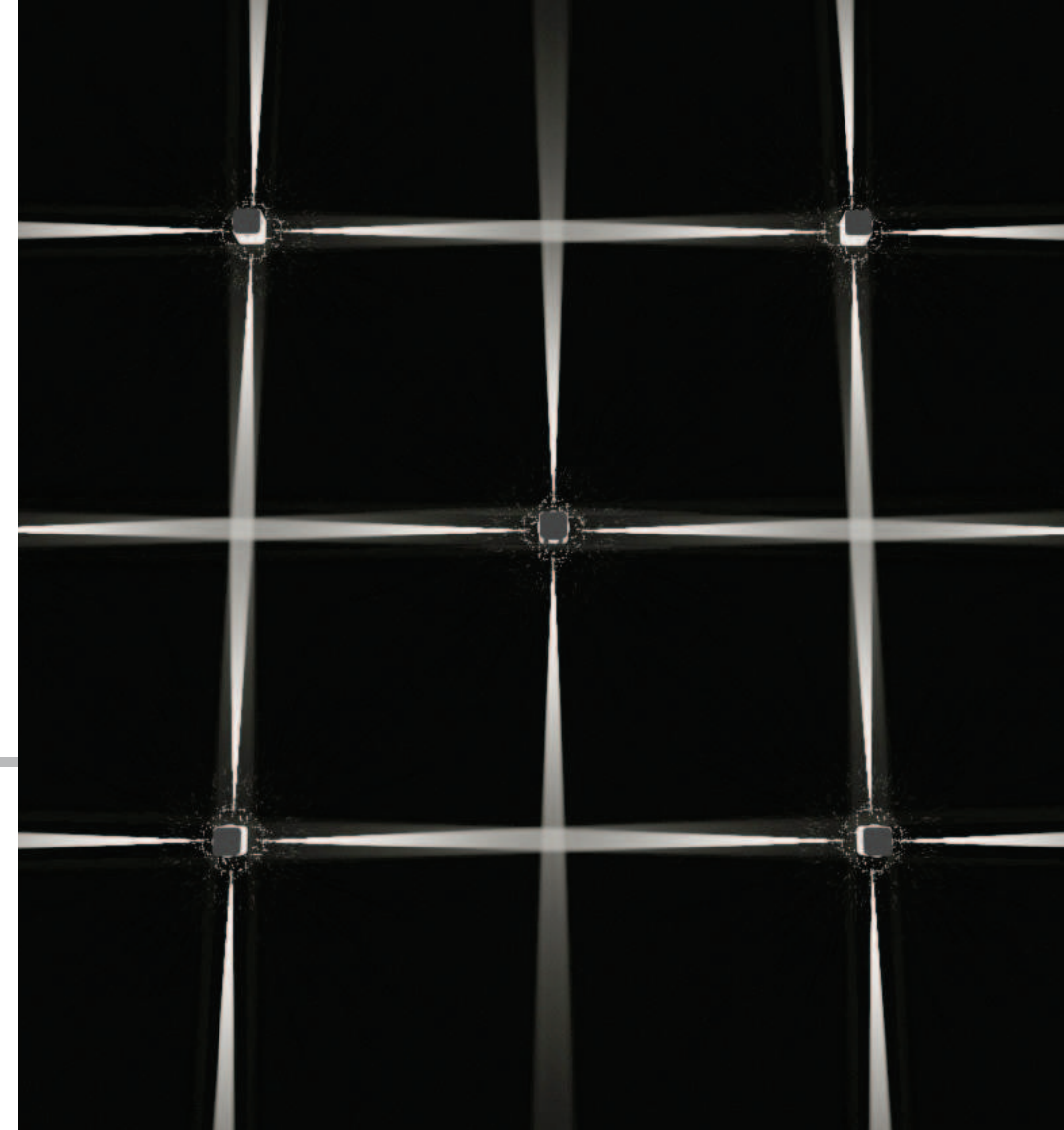
The coloured filter can be easily installed in the specific space behind the diffuser.

BASE DI ANCORAGGIO
+ PICCHETTO NERO IN NYLON
ZINC PLATED STEEL ANCHORAGE
BASE + BLACK NYLON STAKE

124

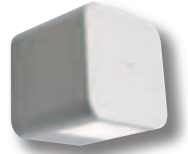
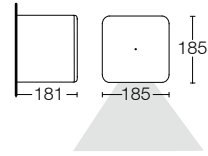


Picchetto per applicazione a suolo.
Nylon stake for ground applications.



1341

1 fascio largo 1 flood beam

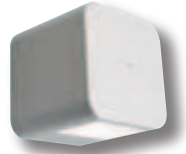
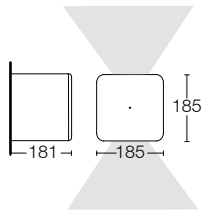


finiture disponibili finishes available

grigio antracite grigio RAL 9006 marrone ruggine
anthracite grey RAL 9006 grey rust brown

1343

2 fasci larghi 2 flood beams

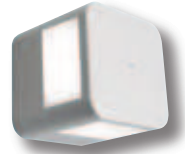
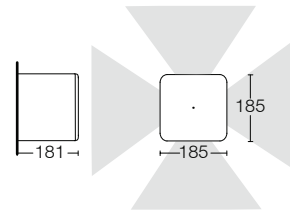


finiture disponibili finishes available

grigio antracite grigio RAL 9006 marrone ruggine
anthracite grey RAL 9006 grey rust brown

1345

4 fasci larghi 2 flood beams

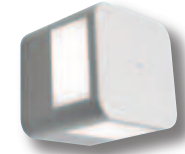
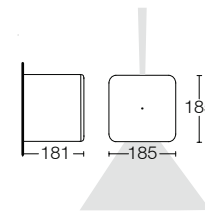


finiture disponibili finishes available

grigio antracite grigio RAL 9006 marrone ruggine
anthracite grey RAL 9006 grey rust brown

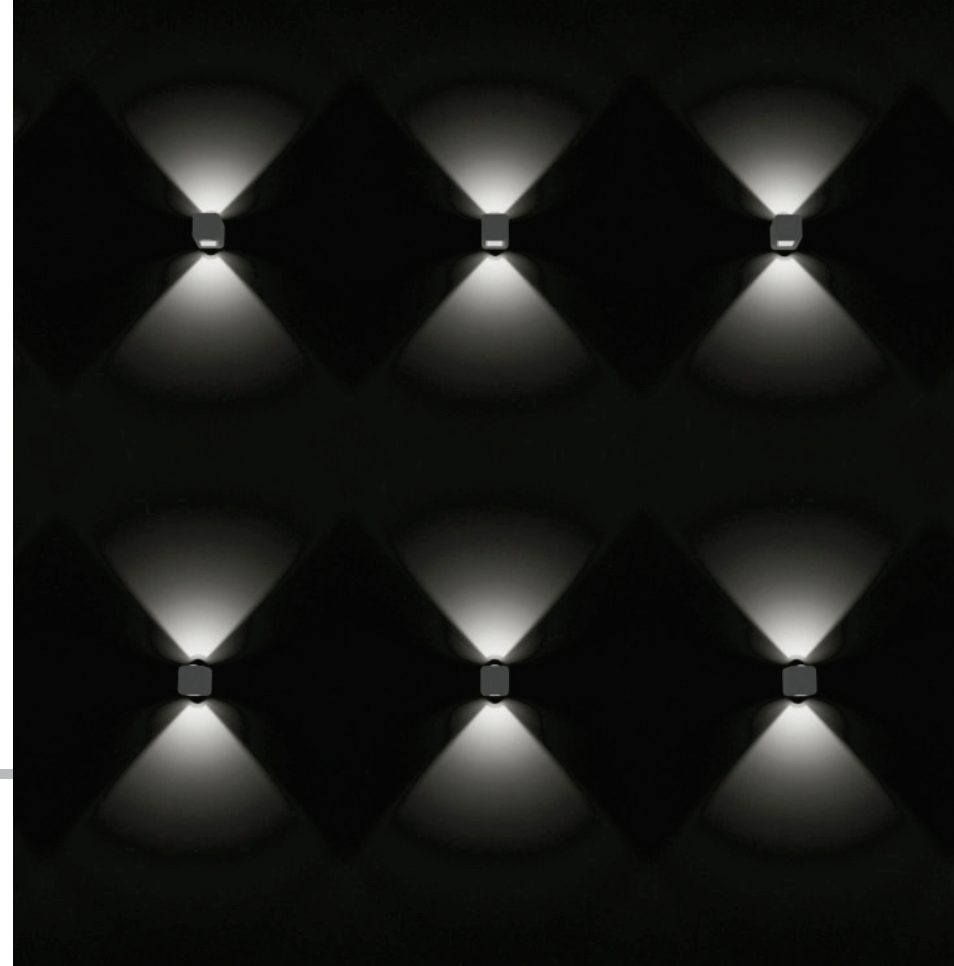
1347

1 fascio stretto + 1 largo 1 spot + 1 flood beam



finiture disponibili finishes available

grigio antracite grigio RAL 9006 marrone ruggine
anthracite grey RAL 9006 grey rust brown



.E9X.T

vetro trasparente clear diffuser
alimentatore elettronico electronic ballast

20W HIT-TC

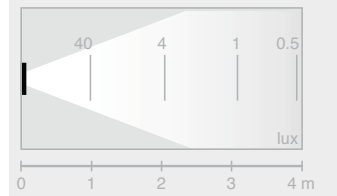
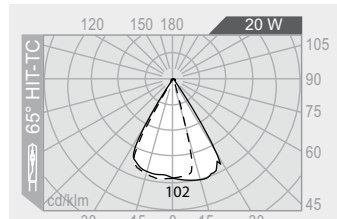
G8,5

flood 65°



1700 lm

con vetro piano
with flat glass



.F6X.T

vetro trasparente clear diffuser

35W HIT-TC

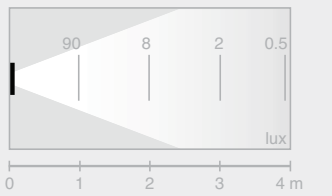
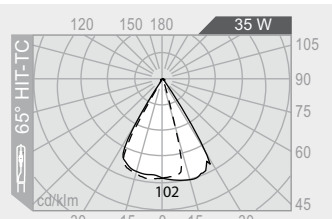
G8,5

flood 65°



3300 lm

con vetro piano
with flat glass



.36X.T

vetro trasparente clear diffuser

100W QT32 Halogen Philips
Hi-Light Sylvania

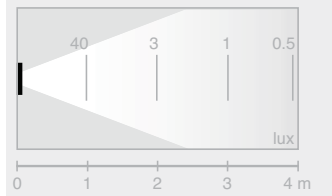
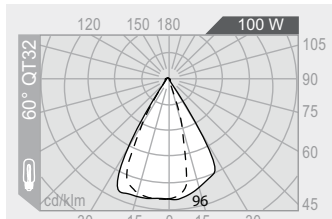
E27

flood 60°



1550 lm

con vetro piano
with flat glass



.G1F.T

vetro trasparente clear diffuser
alimentatore elettronico electronic ballast

18W TC-TEL

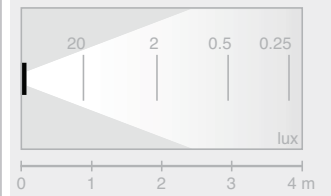
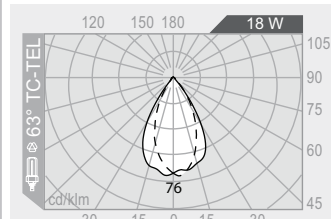
Gx24q-2

flood 66°



1200 lm

con vetro piano
with flat glass



⚠ Non disponibile per versione
cod.1347
No available to version
cod.1347.

codice colori
colour codes

- .05** grigio antracite
anthracite grey
- .13** grigio RAL9006
RAL9006 grey
- .45** marrone ruggine
rust brown

accessori
accessories

FILTRI COLORATI DICROICI
DICHROIC COLOURED FILTERS



LENTE DIFFONDENTE
DIFFUSED LENS

- 113** rosso red
- 114** giallo yellow
- 115** blu blue
- 116** verde green

Il filtro colorato viene facilmente installato
nell'apposito alloggiamento dietro il diffusore.

The coloured filter can be easily installed in
the specific space behind the diffuser.

117



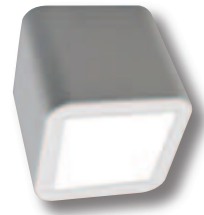
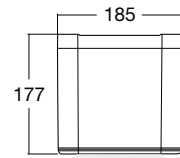
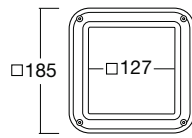
BASE DI ANCORAGGIO
+ PICCHETTO NERO IN NYLON
ZINC PLATED STEEL ANCHORAGE
BASE + BLACK NYLON STAKE

124



1348

1 fascio largo 1 flood



finiture disponibili finishes available

bianco white	grigio antracite anthracite grey	grigio RAL9006 RAL9006 grey	marrone ruggine rust brown
-----------------	-------------------------------------	--------------------------------	-------------------------------

.G1F.A

vetro acidato acid etched diffuser
alimentatore elettronico electronic ballast

18W TC-TE

Gx24q-2

flood

1200 lm



.92F.A

vetro acidato acid etched diffuser
alimentatore elettronico electronic ballast

26W TC-TE

Gx24q-3

flood

1800 lm



! lunghezza max lampadina 131mm
max lamp L 131mm

.E9X.A

vetro acidato acid etched diffuser
alimentatore elettronico electronic ballast

20W HIT

G8,5

flood

1700 lm



.36X.A

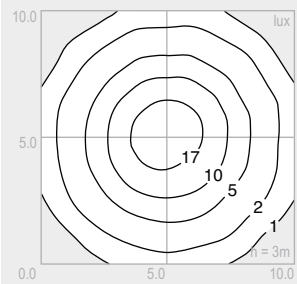
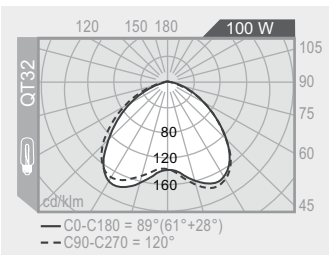
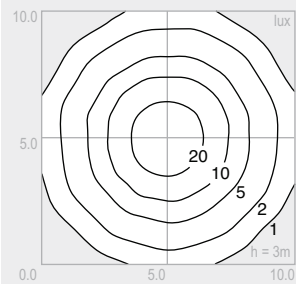
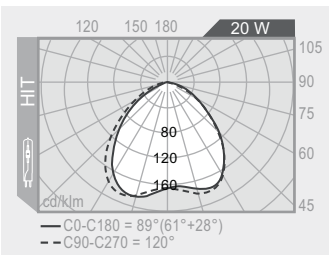
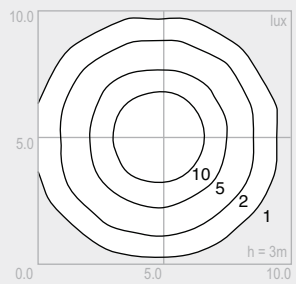
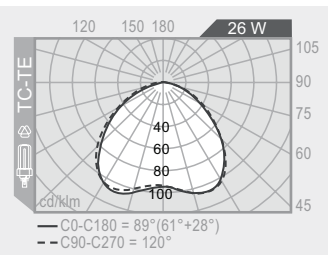
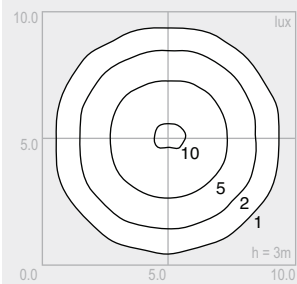
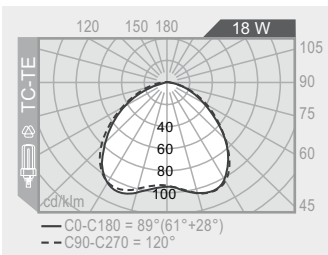
vetro acidato acid etched diffuser

100W QT32 Halogen Philips
Hi-Light Sylvania

E27

flood

1550 lm

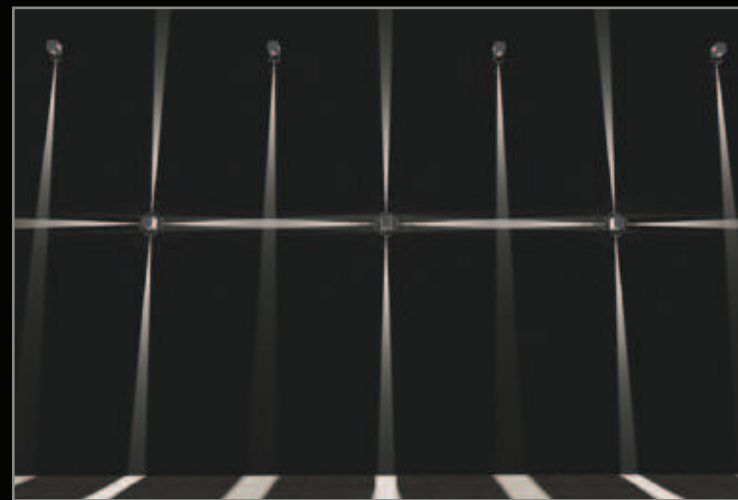


codice colori
colour codes

- .01** bianco
white
- .05** grigio antracite
anthracite grey
- .13** grigio RAL9006
RAL9006 Grey
- .45** marrone ruggine
rust brown



■ 1 fascio stretto 1 spot beam



■ 2 fasci stretti 2 spot beams



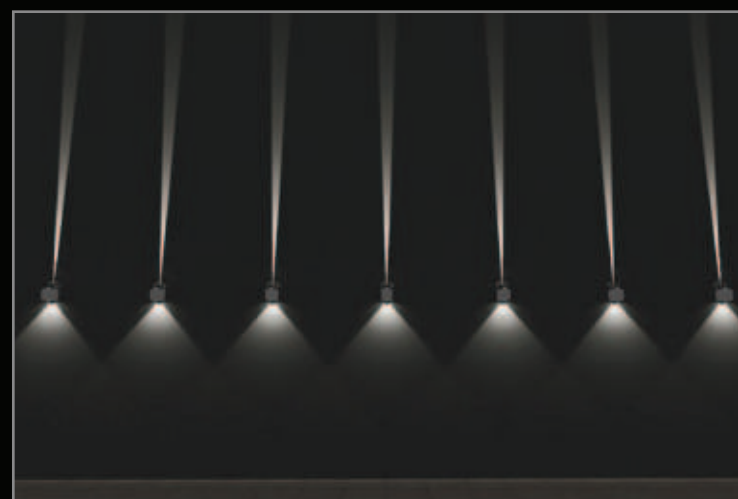
■ 2 fasci stretti 2 spot beams



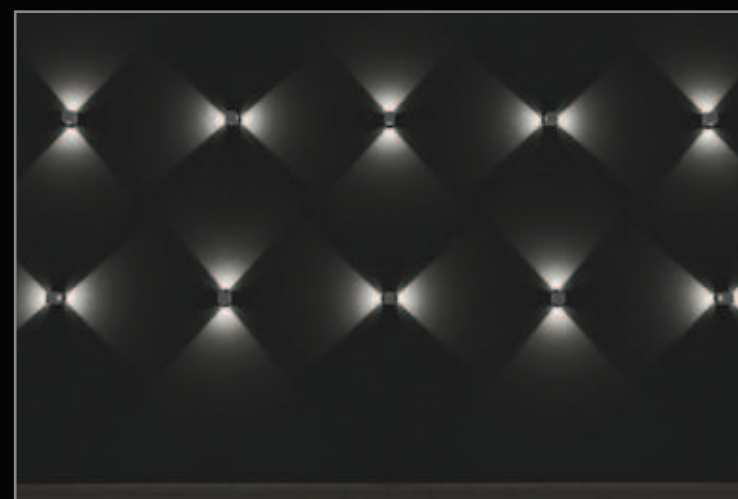
■ 2 fasci stretti 2 spot beams



■ 4 fasci stretti 4 spot beams



■ 1 fascio stretto + 1 largo 1 spot + 1 large beam



■ 2 fasci larghi 2 flood beams



■ 4 fasci larghi 4 flood beams

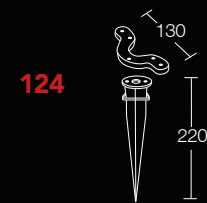
altezza muro wall height 8m
versione 20W HIT 20W HIT version

accessori
accessories

123
BASE DI ANCORAGGIO IN FERRO +
TIRANTI DA CEMENTARE
ZINC PLATED STEEL ANCHORAGE
FOR CONCRETING IN



124
BASE DI ANCORAGGIO
+ PICCHETTO NERO IN NYLON
ZINC PLATED STEEL ANCHORAGE +
BLACK NYLON STAKE



■ 20W HIT 1 fascio largo 20W 1 flood beam

versione 20W HIT version 20W HIT
larghezza totale viale walkway width 4m
interdistanza apparecchi distance between fixtures 3m



■ 20W HIT 2 fasci larghi 20W 2 flood beams



■ 20W HIT 4 fasci larghi 20W 4 flood beams



■ 20W HIT 4 fasci stretti 20W 4 spot beams



■ 35W HIT 1 fascio largo 35W 1 flood beam

versione 35W HIT version 35W HIT
larghezza totale viale walkway width 4m
interdistanza apparecchi distance between fixtures 3m



■ 35W HIT 2 fasci larghi 35W 2 flood beams



■ 35W HIT 4 fasci larghi 35W 4 flood beams



■ 35W HIT 4 fasci stretti 35W 4 spot beams