

Victor

design arch. Helmut Zender

P
A
L
E
T
T
I
P
A
T
H
W
A
Y
L
I
G
H
T
I
N
G



Apparecchi da parete e su paletto. Realizzati in alluminio pressofuso ed estruso ad alta resistenza all'ossidazione.
Diffusore in policarbonato antiurto ad alta resistenza ai raggi UV.
Viteria in acciaio inox.

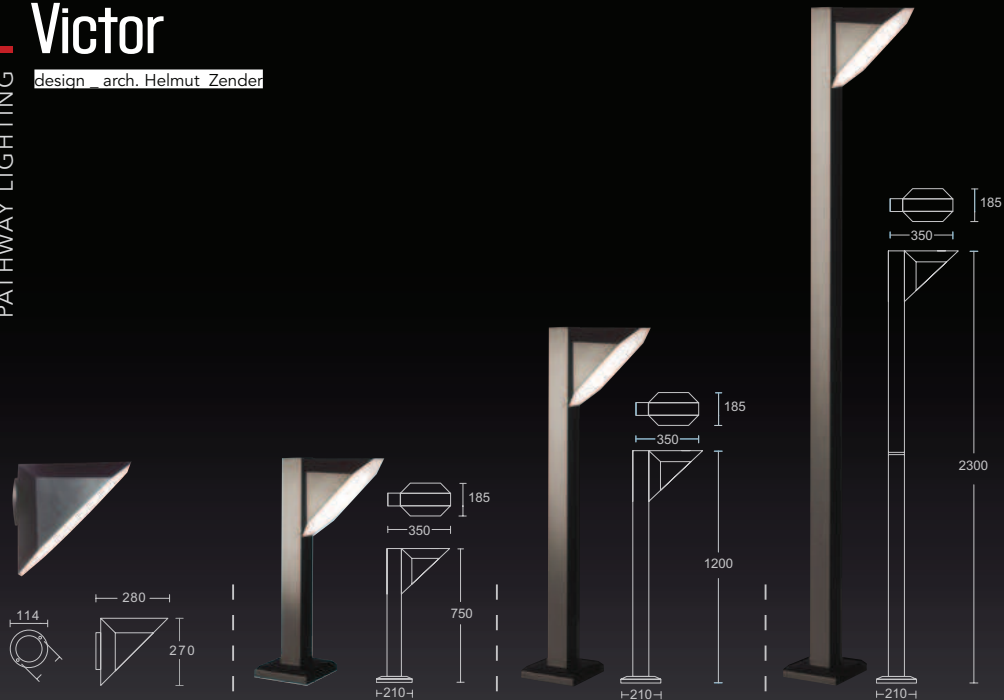
*Wall and pathway lighting fixtures. Made of die-cast and extruded aluminium highly resistant to oxidation.
Vandal proof polycarbonate diffuser UV resistant.
Stainless steel fixings.*



Victor

design arch. Helmut Zender

P A L E T T I N G
P A T H W A Y L I G H T I N G



2301

plafoniera wall version

2311

paletto pathway lighting

2312

paletto pathway lighting

2313

paletto pathway lighting

finiture disponibili finishes available

nero black	grigio antracite anthracite grey	grigio RAL9006 RAL9006 grey
---------------	-------------------------------------	--------------------------------

finiture disponibili finishes available

nero black	grigio antracite anthracite grey	grigio RAL9006 RAL9006 grey
---------------	-------------------------------------	--------------------------------

finiture disponibili finishes available

nero black	grigio antracite anthracite grey	grigio RAL9006 RAL9006 grey
---------------	-------------------------------------	--------------------------------

finiture disponibili finishes available

nero black	grigio antracite anthracite grey	grigio RAL9006 RAL9006 grey
---------------	-------------------------------------	--------------------------------



codice colori
colour codes

- .02** nero
black
- .05** grigio antracite
anthracite grey
- .13** grigio RAL9006
RAL9006 grey

accessori
accessories

BASE PER ANCORAGGIO
ANCHORAGE PLATE



.18F.O

polycarbonato opale opal polycarbonate

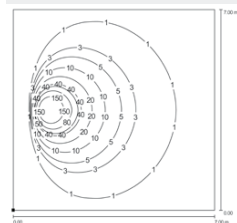
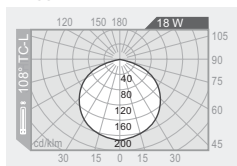
18W TC-L

2G11



flood 108°

1200 lm



.90F.O

polycarbonato opale opal polycarbonate

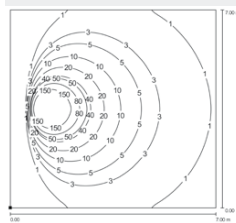
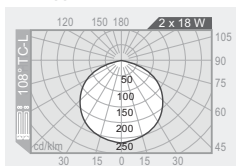
2x18W TC-L

2G11



flood 108°

2x1200 lm



CERTIFICAZIONI
CERTIFICATION



GRADO DI PROTEZIONE
IP RATING

IP54
IP54

CLASSE DI ISOLAMENTO
CLASSIFICATION

classe I
class I

CORPO
HOUSING

alluminio pressofuso EN AB 47100 alta resistenza all'ossidazione
die-cast aluminium EN AB 47100 high resistance to oxidation

DIFFUSORE
DIFFUSER

polycarbonato opale resistente all'urto e ai raggi UV
vandal proof opal polycarbonate UV resistant

VITERIA ESTERNA
EXTERNAL FIXINGS

inox A4
stainless steel A4

GUARNIZIONI
SEALING GASKET

EPDM
EPDM

LAMPADINA
LAMP

esclusa
not included

FINITURA
FINISH

verniciatura in polveri poliesteri ad alta resistenza ai raggi UV ed alla corrosione
powder coated polyester high resistance to UV and oxidation