

Tret

design arch. Margarita Kroucharska

BOLLARDS

GHIDINI
light & space



La linea di bollard TRET è ideale per illuminare piste ciclabili, parchi e percorsi pedonali, sia in aree residenziali che pubbliche. Disegnato dall' arch. Margarita Kroucharska è caratterizzato da forme pulite ed innovative. E' realizzato da elementi in alluminio a basso contenuto di rame per un' elevata resistenza all'ossidazione, verniciato in polveri poliesteri con trattamento anti corrosione, con diffusore in policarbonato antivandalico trasparente e viteria in acciaio inox A4.

Disponibile in 5 altezze: 500 mm, 800 mm, 1.100 mm ed il modello alto TRET UP da 2.400 mm e da 3900 mm.

La gamma è arricchita dai nuovi modelli HIGH PERFORMANCE e CUTOFF nati per rispondere alle sempre più esigenti richieste del mercato. TRET HIGH PERFORMANCE con riflettore in alluminio puro al 99,98%, a doppia riflessione con finitura speculare per ottenere il massimo rendimento luminoso ed un' ottima diffusione della luce. TRET CUTOFF con paraluce e frangiluce a 45° verniciati neri 5 gloss a bassa riflettenza per ottemperare alle più restrittive norme regionali contro l' inquinamento luminoso.

TRET family has been conceived for use pathways, parks and gardens, both in public and residential areas. It is made of die-cast aluminium high resistance to oxidation , with vandal proof polycarbonate diffuser and A4 stainless steel fixings. The TRET range is very broad. Five heights available : 500mm , 800mm , 1100 mm together with model TRET UP 2400mm and 3900mm. Two optics are offered to maximize flexibility : high performance optic obtaining very powerfull lighting output and cut-off optic to fulfill the most strict regulations relative to indirect light emission.





8217 h 500



8211 h 800



8213 h 1100

Cutoff



8203 h 500



8205 h 800



8207 h 1100

High Performance

CERTIFICAZIONI CERTIFICATION



GRADO DI PROTEZIONE IP RATING

IP65
IP65

CLASSE DI ISOLAMENTO CLASSIFICATION

classe I
class I

CORPO HOUSING

alluminio pressofuso EN AB 47100 alta resistenza all'ossidazione
die-cast aluminium EN AB 47100 high resistance to oxidation

PALO POST

alluminio fuso EN AC 44200 alta resistenza all'ossidazione
cast aluminium EN AC 44200 high resistance to oxidation

DIFFUSORE DIFFUSER

polycarbonato trasparente resistente all'urto ed ai raggi UV
vandal proof clear polycarbonate UV resistant

VITERIA ESTERNA EXTERNAL FIXINGS

inox A4
stainless steel A4

GUARNIZIONI SEALING GASKET

silicone ricotto
silicone

ENTRATA CAVO CABLE ENTRY

passacavo in silicone Ø 10/14mm
silicone bushing Ø 10/14mm

LAMPADINA LAMP

esclusa
not included

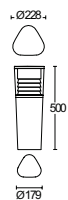
FINITURA FINISH

verniciatura in polveri poliestere ad alta resistenza ai raggi UV ed alla corrosione
powder coated polyester high resistance to UV and oxidation



>>Tret 70W HIT Cut Off

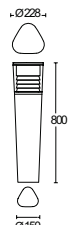
8217 *
cutoff



A

finiture disponibili *finishes available*
grigio antracite / anthracite grey | grigio RAL9006 / RAL9006 grey | marrone ruggine / rust brown

8211 *
cutoff



A

finiture disponibili *finishes available*
grigio antracite / anthracite grey | grigio RAL9006 / RAL9006 grey | marrone ruggine / rust brown

8213 *
cutoff



B

finiture disponibili *finishes available*
grigio antracite / anthracite grey | grigio RAL9006 / RAL9006 grey | marrone ruggine / rust brown



photo: Giemmano Biondi

.17F.T

polycarbonato trasparente
clear polycarbonate

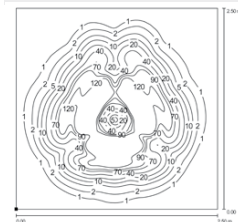
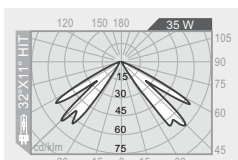
35W HIT

G12

medium 32°x11°



3300 lm



.19F.T

polycarbonato trasparente
clear polycarbonate

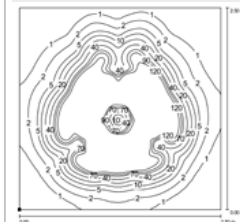
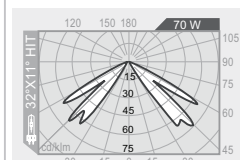
70W HIT

G12

medium 32°x11°



6600 lm



.17F.T

polycarbonato trasparente
clear polycarbonate

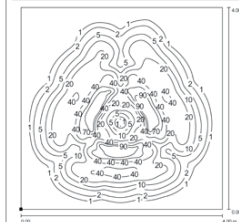
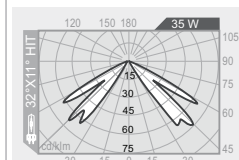
35W HIT

G12

medium 32°x11°



3300 lm



.19F.T

polycarbonato trasparente
clear polycarbonate

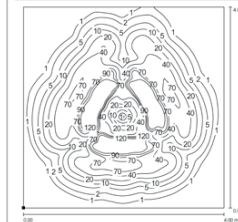
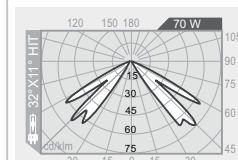
70W HIT

G12

medium 32°x11°



6600 lm



.17F.T

polycarbonato trasparente
clear polycarbonate

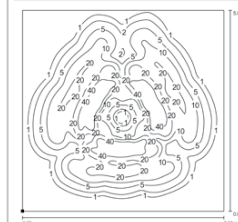
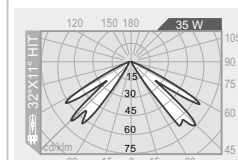
35W HIT

G12

medium 32°x11°



3300 lm



.19F.T

polycarbonato trasparente
clear polycarbonate

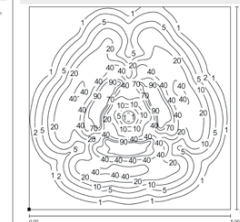
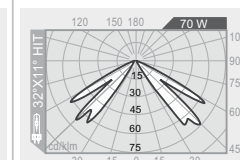
70W HIT

G12

medium 32°x11°



6600 lm



codice colori
colour codes

.05 grigio antracite
anthracite grey

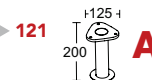
.13 grigio RAL9006
RAL9006 grey

.18 effetto legno
wood effect *su richiesta upon request*

.45 marrone ruggine
rust brown

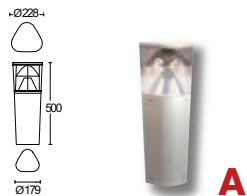
accessori
accessories

BASE DI ANCORAGGIO IN FERRO
ZINCATO DA CEMENTARE
ZINC PLATED STEEL ANCHORAGE
FOR CONCRETING



8203

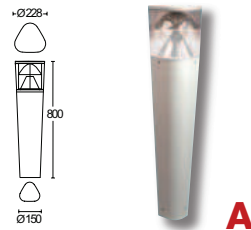
high performance



finiture disponibili finishes available
 grigio antracite anthracite grey
 grigio RAL9006 RAL9006 grey
 marrone ruggine rust brown

8205

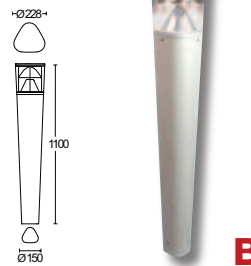
high performance



finiture disponibili finishes available
 grigio antracite anthracite grey
 grigio RAL9006 RAL9006 grey
 marrone ruggine rust brown

8207

high performance



finiture disponibili finishes available
 grigio antracite anthracite grey
 grigio RAL9006 RAL9006 grey
 marrone ruggine rust brown



photo: Germano Borrelli

.17FT

poli carbonato trasparente clear polycarbonate

35W HIT

G12

medium 82°x19°

3300 lm



.19FT

poli carbonato trasparente clear polycarbonate

70W HIT

G12

medium 82°x19°

6600 lm



.17FT

poli carbonato trasparente clear polycarbonate

35W HIT

G12

medium 82°x19°

3300 lm



.19FT

poli carbonato trasparente clear polycarbonate

70W HIT

G12

medium 82°x19°

6600 lm



.17FT

poli carbonato trasparente clear polycarbonate

35W HIT

G12

medium 82°x19°

3300 lm



.19FT

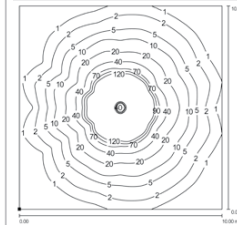
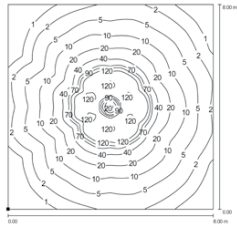
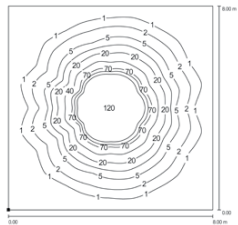
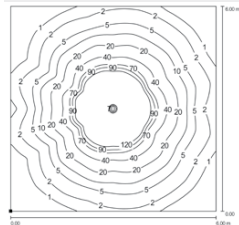
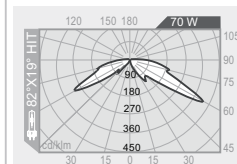
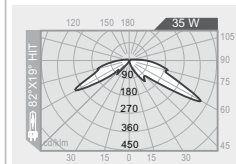
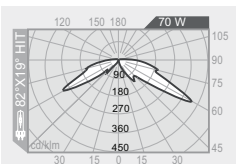
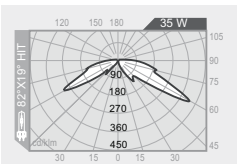
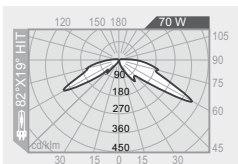
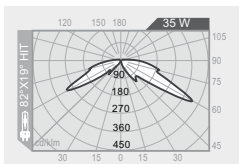
poli carbonato trasparente clear polycarbonate

70W HIT

G12

medium 82°x19°

6600 lm



codice colori colour codes

.05 grigio antracite anthracite grey

.13 grigio RAL9006 RAL9006 grey

.18 effetto legno wood effect su richiesta upon request

.45 marrone ruggine rust brown

accessori accessories

BASE DI ANCORAGGIO IN FERRO ZINCATO DA CEMENTARE ZINC PLATED STEEL ANCHORAGE FOR CONCRETING

