

Ovalla

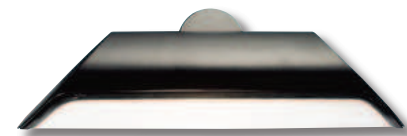
design arch. Helmut Zender

P
A
L
E
T
T
I
P
A
T
H
W
A
Y
L
I
G
H
T
I
N
G



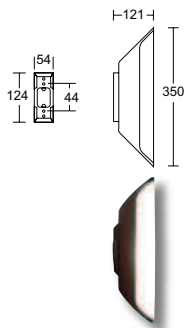
Apparecchi da parete, da soffitto o su paletto. Realizzati in alluminio pressofuso ed estruso ad alta resistenza all'ossidazione. Diffusore in policarbonato antiurto ad alta resistenza ai raggi UV. Viteria in acciaio inox.

Ceiling, wall and pathway lighting fixtures. Made of die-cast and extruded aluminium highly resistant to oxidation. Vandal proof polycarbonate diffuser UV resistant. Stainless steel fixings.



1101

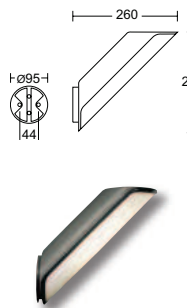
plafoniera wall light



finiture disponibili finishes available
 bianco white | nero black | grigio RAL9006 RAL9006 grey | grigio antracite anthracite grey

1102

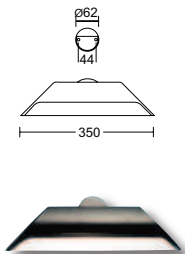
plafoniera wall light



finiture disponibili finishes available
 bianco white | nero black | grigio RAL9006 RAL9006 grey | grigio antracite anthracite grey

1104

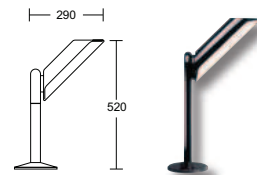
plafoniera wall light



finiture disponibili finishes available
 bianco white | nero black | grigio RAL9006 RAL9006 grey | grigio antracite anthracite grey

1121

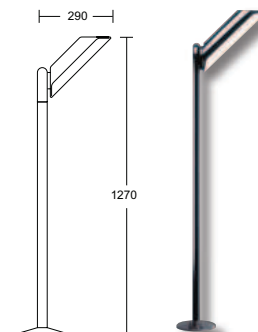
paletto pathway lighting



finiture disponibili finishes available
 bianco white | nero black | grigio RAL9006 RAL9006 grey | grigio antracite anthracite grey

1141

paletto pathway lighting



finiture disponibili finishes available
 bianco white | nero black | grigio RAL9006 RAL9006 grey | grigio antracite anthracite grey

- codice colori colour codes
- .01 bianco white
 - .02 nero black
 - .05 grigio antracite anthracite grey
 - .13 grigio RAL9006 RAL9006 grey

- accessori accessories
- BASE PER ANCORAGGIO ANCHORAGE PLATE **702**
-

.36.F.O

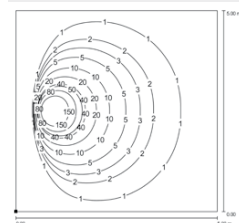
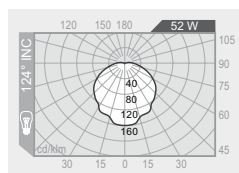
policarbonato opale opal polycarbonate

52W INC (ex. 64544A OSRAM)

E27

flood 124°

840 lm



.70.F.O

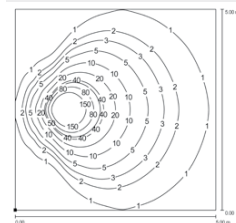
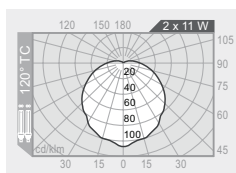
policarbonato opale opal polycarbonate

2x11W TC

G23

flood 120°

2x900 lm



CERTIFICAZIONI CERTIFICATION



GRADO DI PROTEZIONE IP RATING

IP54
IP54

CLASSE DI ISOLAMENTO CLASSIFICATION

classe I class I

CORPO HOUSING

alluminio estruso EN AW 6060 alta resistenza all'ossidazione extruded aluminium EN AW 6060 high resistance to oxidation

DIFFUSORE DIFFUSER

plexiglass opale resistente all'urto e ai raggi UV vandal proof opal polycarbonate UV resistant

VITERIA ESTERNA EXTERNAL FIXINGS

inox A4 stainless steel A4

GUARNIZIONI SEALING GASKET

EPDM EPDM

LAMPADINA LAMP

esclusa not included

FINITURA FINISH

verniciatura in polveri poliestere ad alta resistenza ai raggi UV ed alla corrosione powder coated polyester high resistance to UV and oxidation