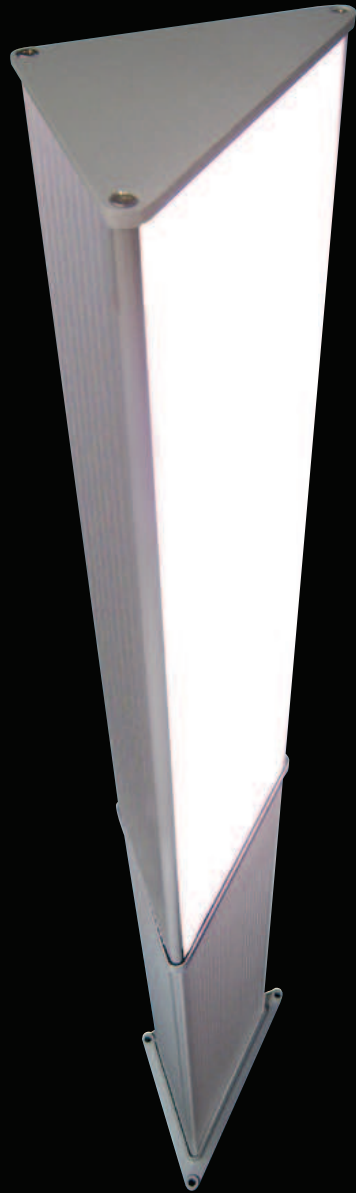


# Neon Tre

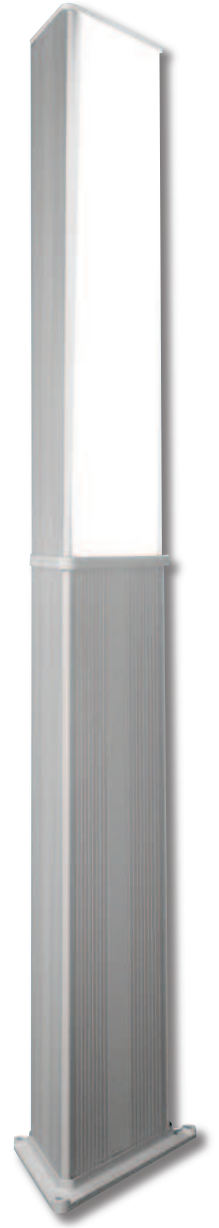
design arch. Helmut Zender

P  
A  
L  
E  
T  
T  
I  
P  
A  
T  
H  
W  
A  
Y  
L  
I  
G  
H  
T  
I  
N  
G



Apparecchi da parete o su palo. Realizzati in alluminio estruso ad alta resistenza all'ossidazione. Diffusore in plexiglass antiurto ad alta resistenza ai raggi UV. Viteria in acciaio inox.

*Wall and pathway lighting fixtures. Made of extruded aluminum highly resistant to oxidation. Vandal proof plexiglass diffuser UV resistant. Stainless steel fixings.*

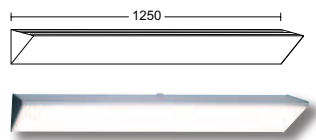


# Neon Tre

design arch. Helmut Zender

## 6312

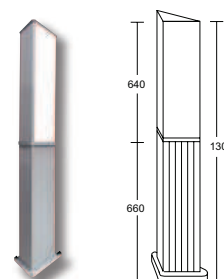
plafoniera wall light  
2x36W



finiture disponibili finishes available  
grigio antracite grigio RAL9006  
anthracite grey RAL9006 grey

## 6328

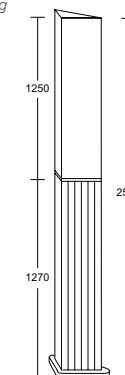
paletto pathway lighting  
2x18W



finiture disponibili finishes available  
grigio antracite grigio RAL9006  
anthracite grey RAL9006 grey

## 6338

paletto pathway lighting  
2x36W



finiture disponibili finishes available  
grigio antracite grigio RAL9006  
anthracite grey RAL9006 grey

### .F1.F.O

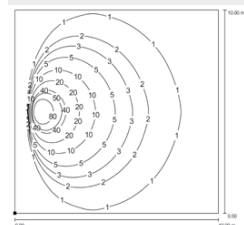
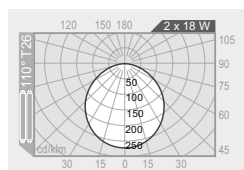
plexiglass opale opal plexiglass  
alimentatore elettronico electronic ballast

2x18W T26

G13

flood 110°

2x1000 lm



### .F2.F.O

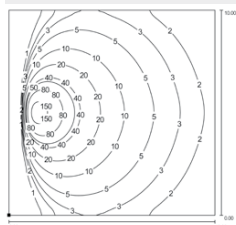
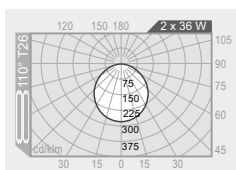
plexiglass opale opal plexiglass  
alimentatore elettronico electronic ballast

2x36W T26

G13

flood 110°

2x2350 lm



codice colori colour codes  
.05 grigio antracite  
anthracite grey  
.13 grigio RAL9006  
RAL9006 grey

accessori accessories  
BASE PER ANCORAGGIO ANCHORAGE PLATE  
703



CERTIFICAZIONI  
CERTIFICATION



GRADO DI PROTEZIONE  
IP RATING

IP54  
IP54

CLASSE DI ISOLAMENTO  
CLASSIFICATION

classe I  
class I

CORPO  
HOUSING

alluminio estruso EN AW 6060 alta resistenza all'ossidazione  
extruded aluminum EN AW 6060 high resistance to oxidation

DIFFUSORE  
DIFFUSER

plexiglass opale  
opal plexiglass

VITERIA ESTERNA  
EXTERNAL FIXINGS

inox A4  
stainless steel A4

GUARNIZIONI  
SEALING GASKET

silicone ricotto  
silicone

LAMPADINA  
LAMP

esclusa  
not included

FINITURA  
FINISH

verniciatura in polveri poliestere ad alta resistenza ai raggi UV ed alla corrosione  
powder coated polyester high resistance to UV and oxidation