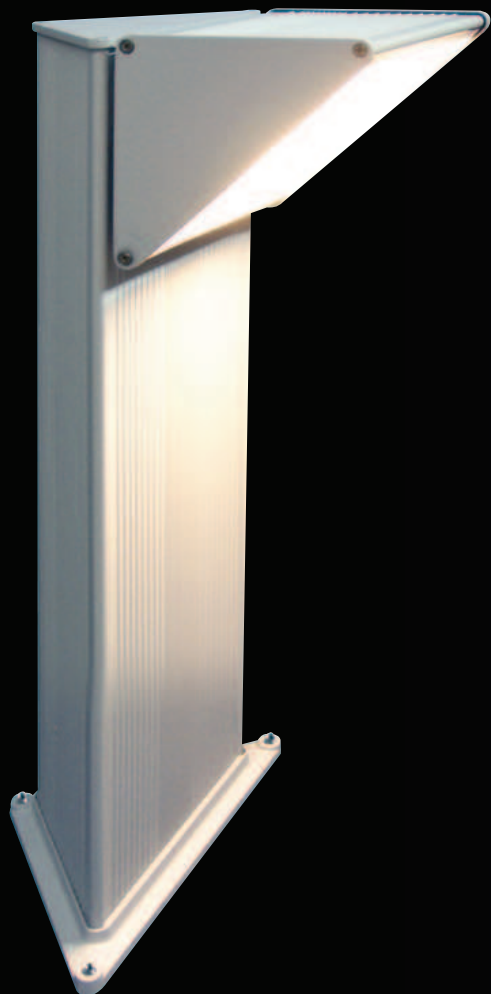


# Mignon

P A L E T T I  
PATHWAY LIGHTING



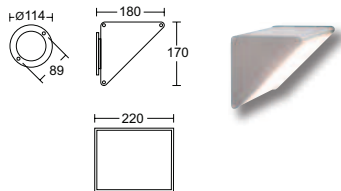
Apparecchi da parete o su paletto. Realizzati in alluminio estruso ad alta resistenza all'ossidazione.  
Diffusore in plexiglass antiurto ad alta resistenza ai raggi UV.  
Viteria in acciaio inox.

*Wall and pathway lighting fixtures. Made of extruded aluminium highly resistant to oxidation. Vandal proof polycarbonate diffuser UV resistant. Stainless steel fixings.*



## 6400

plafoniera wall light

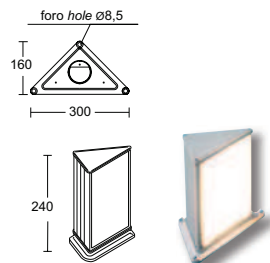


finiture disponibili finishes available

nero | grigio antracite | grigio RAL9006  
black | anthracite grey | RAL9006 grey

## 6406

paletto pathway lighting

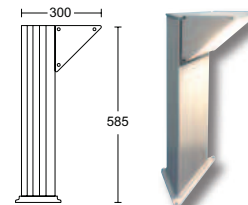


finiture disponibili finishes available

nero | grigio antracite | grigio RAL9006  
black | anthracite grey | RAL9006 grey

## 6402

paletto pathway lighting

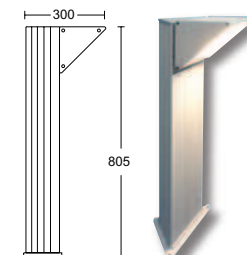


finiture disponibili finishes available

nero | grigio antracite | grigio RAL9006  
black | anthracite grey | RAL9006 grey

## 6403

paletto pathway lighting

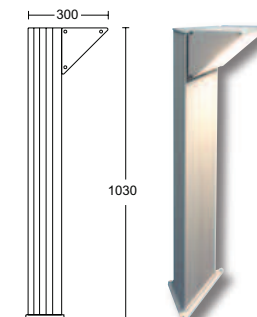


finiture disponibili finishes available

nero | grigio antracite | grigio RAL9006  
black | anthracite grey | RAL9006 grey

## 6404

paletto pathway lighting



finiture disponibili finishes available

nero | grigio antracite | grigio RAL9006  
black | anthracite grey | RAL9006 grey

## .75F.O

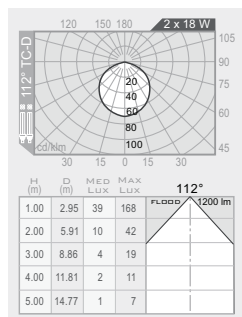
plexiglass opale opal polycarbonate

2x18W TC-D

G24d-2

flood 112°

2x1200 lm



## .78F.O

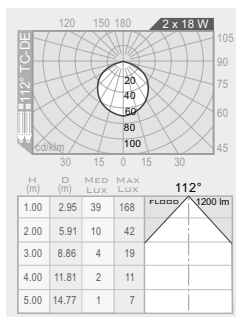
plexiglass opale opal polycarbonate  
alimentatore elettronico electronic ballast

2x18W TC-DE

G24q-2

flood 112°

2x1200 lm



codice colori  
colour codes

.02  nero  
black

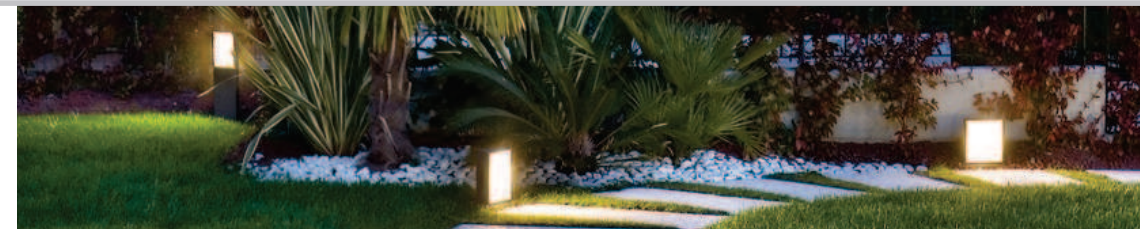
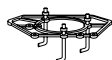
.05  grigio antracite  
anthracite grey

.13  grigio RAL9006  
RAL9006 grey

accessori  
accessories

BASE PER ANCORAGGIO  
ANCHORAGE PLATE

703



CERTIFICAZIONI  
CERTIFICATION



GRADO DI PROTEZIONE  
IP RATING

IP54  
IP54

CLASSE DI ISOLAMENTO  
CLASSIFICATION

classe I  
class I

CORPO  
HOUSING

alluminio estruso EN AW 6060 alta resistenza all'ossidazione  
extruded aluminum EN AW 6060 high resistance to oxidation

DIFFUSORE  
DIFFUSER

plexiglass opale  
opal polycarbonate

VITERIA ESTERNA  
EXTERNAL FIXINGS

inox A4  
stainless steel A4

GUARNIZIONI  
SEALING GASKET

silicone ricotto  
silicone

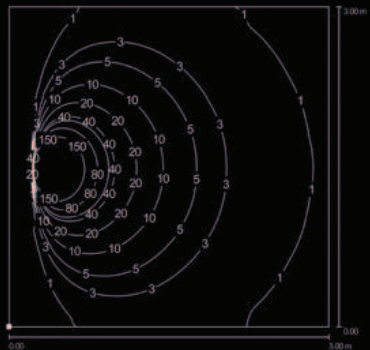
LAMPADINA  
LAMP

esclusa  
not included

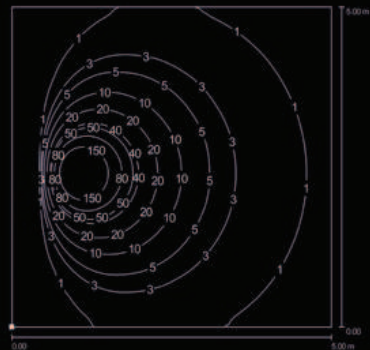
FINITURA  
FINISH

verniciatura in polveri poliestere ad alta resistenza ai raggi UV ed alla corrosione  
powder coated polyester high resistance to UV and oxidation

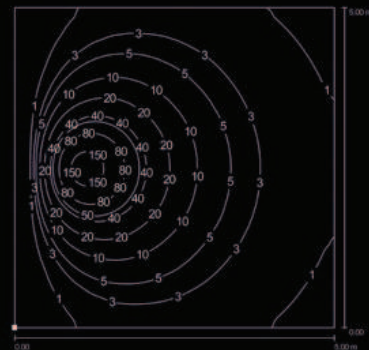
# Mignon



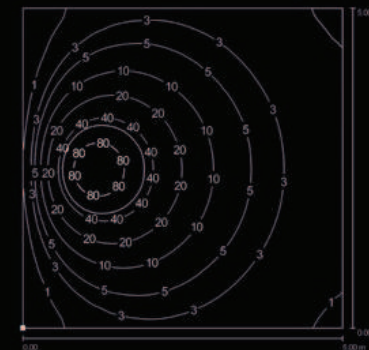
cod. 6406 H240 2x18W



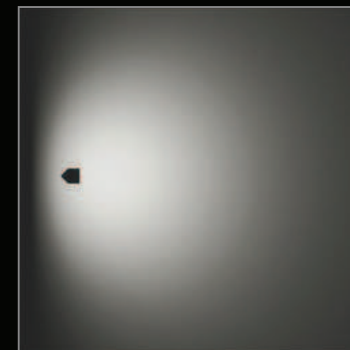
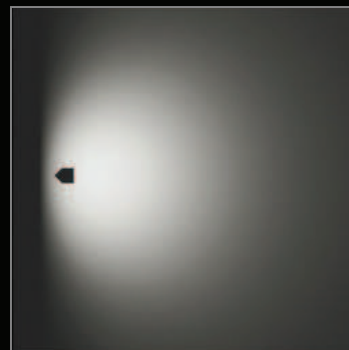
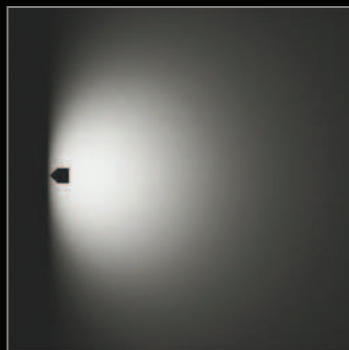
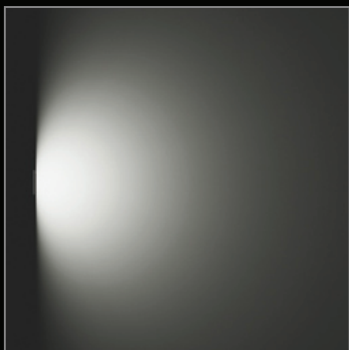
cod. 6402 H585 2x18W



cod. 6403 H805 2x18W



cod. 6404 H1030 2x18W



■ H 240 2x18W TC-D 112° flood



■ H 585 2x18W TC-D 112° flood



■ H 805 2x18W TC-D 112° flood



■ H 1030 2x18W TC-D 112° flood