

Breeze

design arch. Margarita Kroucharska Gianni Forcolini

PALI ARREDO URBANO
URBAN COLUMNS

GHIDINI
light & space



Apparecchio in alluminio pressofuso per l'illuminazione urbana di piazze e percorsi, spazi verdi pubblici e privati, parchi e giardini. La forma dell'oggetto è ispirata dal linguaggio organico del mondo naturale - il seme trasportato dal vento, un giovane fusto mosso dalla brezza. È particolare l'incastro "morbido" tra i due elementi - il palo e il corpo illuminante che crea l'illusione visiva di leggerezza e di libero volo nello spazio. Rispetta la normativa anti-inquinamento luminoso, è disponibile in classe II.

BREEZE made of die-cast aluminium. It is a urban column with one or double heads for use in public environments, parks, parking lots and architectural applications. Wood effect finish available in addition to many different finishes. Dark Sky approved system available in accordance with most restrictive regulations on indirect light control emission. Accessories available include an anchor plate.



Breeze

design arch. Margarita Kroucharska Gianni Forcolini

PALI ARREDO URBANO
URBAN COLUMNS



1403 h 3643



1405 h 4643

NEW

CERTIFICAZIONI CERTIFICATION



GRADO DI PROTEZIONE IP RATING

IP55
IP55

CLASSE DI ISOLAMENTO CLASSIFICATION

classe I/II ⊕ □
class I/II ⊕ □

CORPO HOUSING

alluminio fuso EN AB 47100 alta resistenza all'ossidazione
casted aluminum EN AB 47100 high resistance to oxidation

PALO COLUMN

alluminio fuso EN AC 44200 alta resistenza all'ossidazione
casted aluminium EN AC 44200 high resistance to oxidation

DIFFUSORE DIFFUSER

vetro bombato sodico calcico temprato 5 mm
5 mm soda-lime tempered cast glass

VITERIA ESTERNA EXTERNAL FIXINGS

inox A4
stainless steel A4

GUARNIZIONI SEALING GASKET

silicone ricotto
silicone

CABLAGGIO WIRING

apparecchio fornito con 3,3m di cavo H07RN-F pre cablato
fixture supplied pre-wired cable 3.3m long H07RN-F

RIFLETTORE REFLECTOR

alluminio con deposizione in alto vuoto di alluminio purissimo 99,99%
99.99% pure aluminium high vacuum deposit

LAMPADINA BULB

esclusa
not included

FINITURA FINISH

verniciatura in polveri poliestere ad alta resistenza ai raggi UV ed alla corrosione
powder coated polyester high resistance to UV and oxidation



>>Breeze 150W HIT - DE

Breeze

design _ arch. Margaritha Kroucharska_Gianni Forcolini

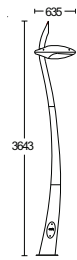
IP 55 classe I - 230 V 50 Hz
classe II



Foto: Cristiano Bazzani

PALI ARREDO URBANO
URBAN COLUMNS

1403



finiture disponibili *finishes available*
grigio antracite | grigio RAL 9006 | marrone ruggine
anthracite grey | RAL 9006 grey | rust brown

1405 *new*



finiture disponibili *finishes available*
grigio antracite | grigio RAL 9006 | marrone ruggine
anthracite grey | RAL 9006 grey | rust brown

.59F.A

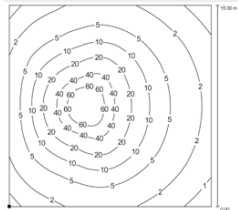
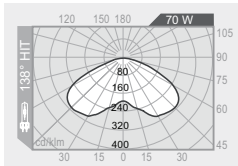
vetro acidato acid etched diffuser
classe I class I

70W HIT- DE HST-DE

Rx7s

flood 138°

6600 lm



Isolux version 1403

.61F.A

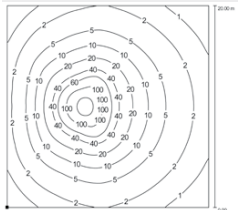
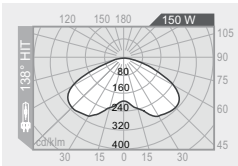
vetro acidato acid etched diffuser
classe I class I

150W HIT- DE HST-DE

Rx7s-24

flood 138°

14000 lm



Isolux version 1403

.17F.T

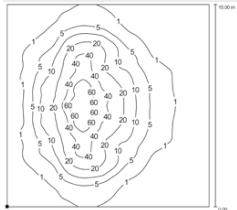
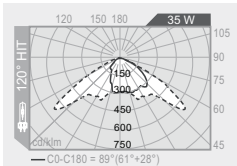
vetro trasparente clear diffuser
classe II class II

35W HIT cut off

G12

flood 120°

3300 lm



Isolux version 1403

.69F.T

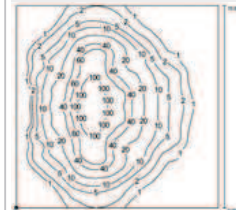
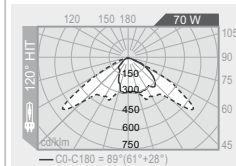
vetro trasparente clear diffuser
classe II class II

70W HIT cut off

G12

flood 120°

6600 lm



Isolux version 1403

.73F.T

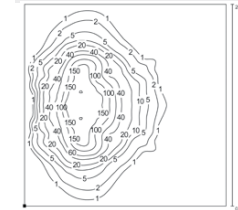
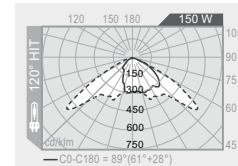
vetro trasparente clear diffuser
classe II class II

150W HIT cut off

G12

flood 120°

14000 lm



Isolux version 1403

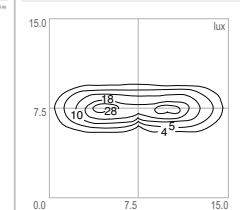
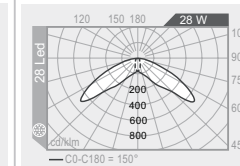
.107.T

vetro trasparente clear diffuser
simmetrico dysimmetric
classe I class I

28W 28LED cut off

flood

1800 lm 4000 K Neutral White



Isolux version 1403

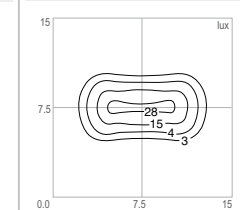
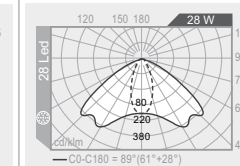
.108.T

vetro trasparente clear diffuser
simmetrico dysimmetric
classe I class I

28W 28LED cut off

flood

1800 lm 4000 K Neutral White



Isolux version 1403

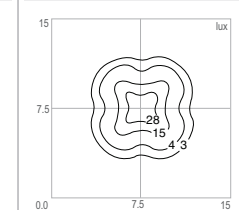
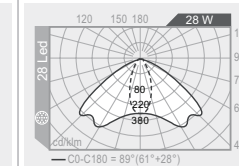
.109.T

vetro trasparente clear diffuser
simmetrico dysimmetric
classe I class I

28W 28LED cut off

flood

1800 lm 4000 K Neutral White



Isolux version 1403

codice colori
colour codes

.05 grigio antracite
anthracite grey

.13 grigio RAL9006
RAL9006 grey

.45 marrone ruggine
rust brown

.18 effetto legno
wood effect su richiesta upon request

La testa palo non è disponibile
con l'effetto legno cod.18.

The head of the column is not
available with wood effect
cod.18.

Dati fotometrici LED da confermare
LEDs photometry to be confirmed

accessori
accessories

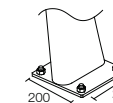
**BASE DI ANCORAGGIO IN FERRO
ZINCATO CON TIRANTI**

425



BASE IN FERRO PER ANCORAGGIO

.SFR



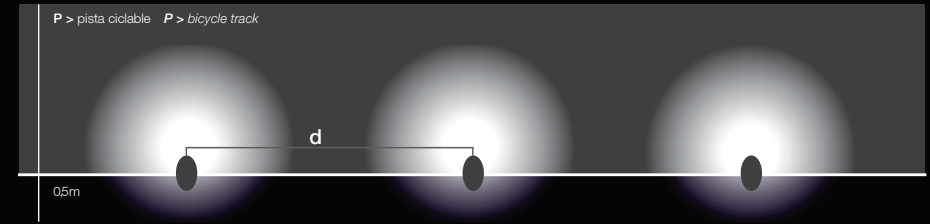
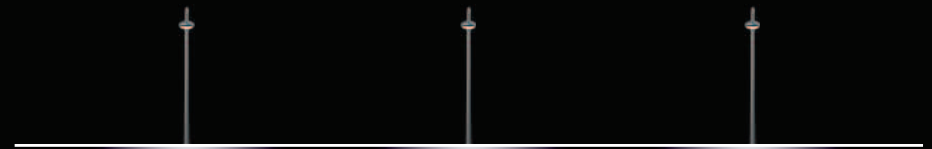
Breeze

design _ arch. Margarita Kroucharska_Gianni Forcollini

PALI ARREDO URBANO
URBAN COLUMNS



corpo in alluminio fuso EN AC 44200 alta resistenza all'ossidazione
cast aluminum housing EN AC 44200 high resistance to oxidation



h palo column h	potenza power	P = pista ciclabile bicycle track width M =marciapiede M =sidewalk	interdistanza distance	illum. medio E med [lx]	illum.min E min [lx]	illum.max E max [lx]
3,1 m	35W		d = 11 m	17 lux	5,5 lux	37 lux

Elementi stradali corrispondenti: P = Pista ciclabile. Classe di illuminazione selezionata: S1
(Tutti i requisiti fotometrici sono rispettati secondo UNI EN 13201)
Road elements corresponding: P = Bicycle track. Lighting class selected: S1
(Photometrics requirements meet UNI EN 13201 standard)

h palo column h	potenza power	P = pista ciclabile bicycle track width M =marciapiede M =sidewalk	interdistanza distance	illum. medio E med [lx]	illum.min E min [lx]	illum.max E max [lx]
3,1 m	70W		d = 12 m	32 lux	5 lux	73 lux



■ 35W HIT Cut Off flood



■ 70W HIT Cut Off flood