

# Ercole

P L A F O N I E R E  
S U R F A C E M O U N T E D



Apparecchi da parete. Realizzati in alluminio pressofuso ad alta resistenza all'ossidazione. Diffusore in policarbonato antiurto ad alta resistenza ai raggi UV. Viteria in acciaio inox.

*Ceiling and wall lighting fixture. Made of die-cast aluminum highly resistant to oxidation. Vandal proof polycarbonate diffuser UV resistant. Stainless steel fixings.*





6680 □ 276 - h 112



6683 □ 276 - h 130

## Maxiercole



6670 □ 236 - h 110



6673 □ 236 - h 130

## Ercole

**CERTIFICAZIONI**  
CERTIFICATION



**GRADO DI PROTEZIONE**  
IP RATING

IP54  
IP54

**CLASSE DI ISOLAMENTO**  
CLASSIFICATION

classe I  
class I

**CORPO**  
HOUSING

alluminio pressofuso EN AB 47100 alta resistenza all'ossidazione  
die-cast aluminium EN AB 47100 high resistance to oxidation

**DIFFUSORE**  
DIFFUSER

poli carbonato opale resistente all'urto ed ai raggi UV  
vandal proof polycarbonate UV resistant

**VITERIA ESTERNA**  
EXTERNAL FIXINGS

inox A4  
stainless steel A4

**GUARNIZIONI**  
SEALING GASKET

silicone ricotto  
silicone

**APERTURA**  
OPENING

a cerniera  
by hinge

**LAMPADINA**  
LAMP

esclusa  
not included

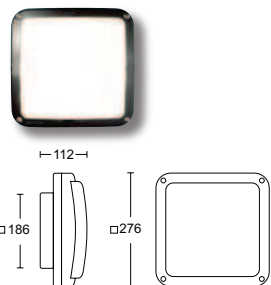
**FINITURA**  
FINISH

verniciatura in polveri poliestere ad alta resistenza ai raggi UV ed alla corrosione  
powder coated polyester high resistance to UV and oxidation



## 6680

Maxiercole

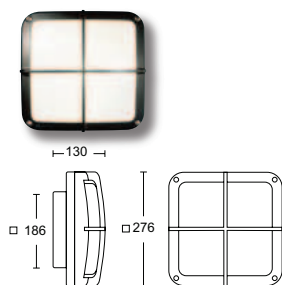


finiture disponibili finishes available

bianco white | nero black | grigio RAL9006 RAL9006 grey | grigio antracite anthracite grey | marrone ruggine rust brown

## 6683

Maxiercole

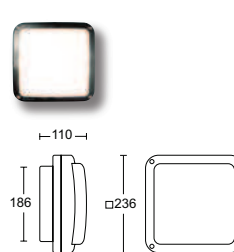


finiture disponibili finishes available

bianco white | nero black | grigio RAL9006 RAL9006 grey | grigio antracite anthracite grey | marrone ruggine rust brown

## 6670

Ercole

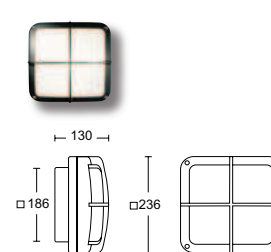


finiture disponibili finishes available

bianco white | nero black | grigio RAL9006 RAL9006 grey | grigio antracite anthracite grey | marrone ruggine rust brown

## 6673

Ercole



finiture disponibili finishes available

bianco white | nero black | grigio RAL9006 RAL9006 grey | grigio antracite anthracite grey | marrone ruggine rust brown

### .36F.O

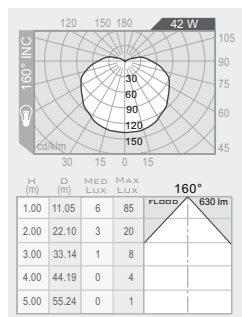
policarbonato opale opal polycarbonate

42W INC (ex.64343A OSRAM)

E27

flood 160°

630 lm



### .91F.O

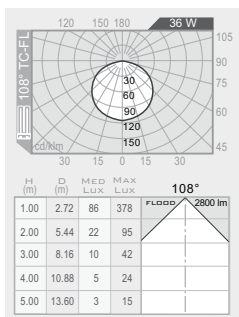
policarbonato opale opal polycarbonate

36W TC-FL

2G10

flood 108°

2800 lm



### .36F.O

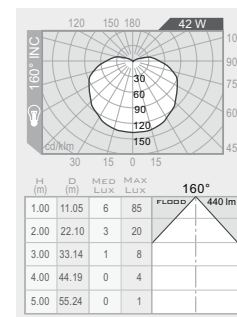
policarbonato opale opal polycarbonate

42W INC (ex.64343A OSRAM)

E27

flood 160°

630 lm



### .76F.O

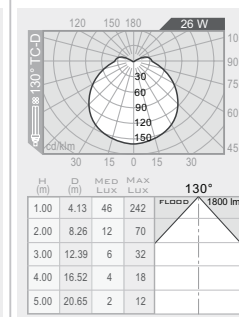
policarbonato opale opal polycarbonate

26W TC-D

G24d-3

flood 130°

1800 lm



codice colori  
colour codes

- .01**  bianco white
- .02**  nero black
- .13**  grigio RAL9006 RAL9006 grey
- .05**  grigio antracite anthracite grey
- .45**  marrone ruggine rust brown