

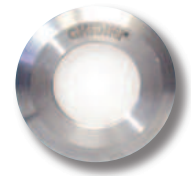
# Segno Led

INCASSI SUOLO  
INGROUND RECESSED

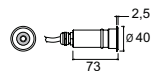


Apparecchio ad incasso dalle ridottissime dimensioni. Il corpo e la cornice in acciaio Inox Aisi 316L ne garantiscono un' altissima resistenza all'ossidazione. La sorgente luminosa led risponde alle esigenze di risparmio energetico. E' studiato per l'illuminamento di passaggi e percorsi guidati.

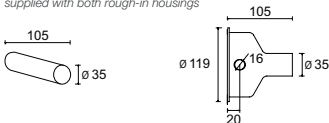
*Small sized wall recessed fixture. The body and the frame are made of Aisi 316L stainless steel which guarantees high resistance to oxidation. The LEDs lighting source meets energy saving requirements. It is designed to light passages ,walk ways , steps and staircases.*



**1290**



fornite entrambe le controcasse  
supplied with both rough-in housings



finiture disponibili finishes available  
acciaio inox  
stainless steel

**.645.T**

vetro trasparente e acidato clear and acid etched diffusers included  
alimentatore non incluso led driver not included

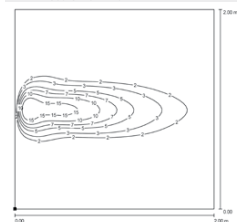
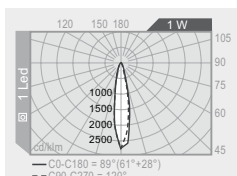
1W 1Led 350mA

bianco white

spot / medium 8°/24° 

33 °C T superficiale max  
max surface T

35 lm 6000 K Cool White



accessori  
accessories

**ALIMENTATORE 350mA**  
(100x40x27mm)  
LED DRIVER 350mA  
(100x40x27mm)

**622**



Massima distanza connessione Max connection distance	
10W per vers. 1Led 1W 1 alimentatore per 9 Segno Led.	
<b>filo / wire</b>	<b>max. dist.</b>
0,75 mm <sup>2</sup>	22 mt
1 mm <sup>2</sup>	30 mt
1,5 mm <sup>2</sup>	45 mt
10W for 1Led 1W 1 local power source for 9 Segno Led.	

FILTRI COLORATI  
COLOURED FILTERS

**379** rosso red **380** giallo yellow

**381** blu blue **382** verde green

Il filtro colorato viene facilmente installato  
nell'apposito alloggiamento sotto il diffusore.

The coloured filter can be easily installed in  
the specific space under the diffuser.



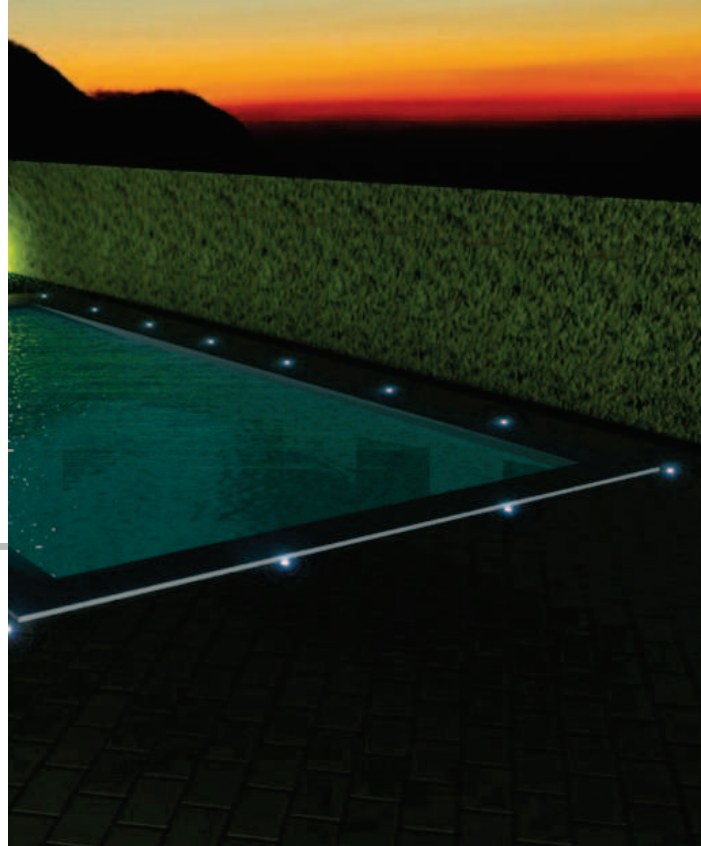
codice colori  
colour codes

**.15**  acciaio inox  
stainless steel

luce calda  
warm white

**.550**

conversione luce calda 3200 °K  
warm white conversion 3200 °K



CERTIFICAZIONI  
CERTIFICATION



**GRADO DI PROTEZIONE**  
IP / IK RATING

IP 67 IK 10 resistenza meccanica diffusore 20 Joule  
IP 67 IK 10 mechanical diffuser resistant 20 Joule

**CLASSE DI ISOLAMENTO**  
CLASSIFICATION

classe III   
class III

**CORPO**  
HOUSING

inox AISI 316L  
stainless steel AISI 316L

**CONTROCASSA**  
ROUGH-IN HOUSING

termoplastica (2 controcasse incluse)  
thermoplastic (2 rough in housing included)

**DIFFUSORE**  
DIFFUSER

vetro sodico calcico temprato 5 mm (nell'imballo sono inclusi vetro trasparente e acidato)  
5 mm soda-lime tempered glass (clear and acid etched glass included in the packaging)

**GUARNIZIONI**  
SEALING GASKET

silicone ricotto  
silicone

**CABLAGGIO**  
WIRING

apparecchio fornito con cavo lungo 0,5m H05RN8-F pre cablato con pressacavo M16 O10/14mm  
fixture supplied with pre wired cable 0.5m long H05RN8-F with cable gland M16 O10/14 mm.

**LED**  
LED

incluso  
included

**FINITURA**  
FINISH

inox AISI 316L  
stainless steel AISI 316L

